

# SUD Learning Day

## Part 1 | 42 CFR Part 2: Confidentiality of Alcohol and Drug Abuse Patient Records

*Presenter: Ross D'Emanuele, Dorsey & Whitney LLP*

42 CFR Part 2 is a regulation that governs the confidentiality of SUD patient records. Recently updated in 2018 by SAMHSA, this rule generally prohibits certain programs from disclosing health information that may identify a person as having or having had an SUD, without written consent. Federally assisted substance use programs are required to comply with this law and its recent updates. An expert from HITEQ will be providing this training, and will cover the following items:

- Overview of 42 CFR Part 2 & 2018 Final Rule Updates
- FQHC Compliance with 42 CFR Part 2
  - What information is subject to Part 2?
  - Who must comply?
  - Consent Requirements
  - Prohibitions on Re-disclosure
  - Interactions with HIPAA and MN Health Record Act

## Part 2 | MN SUD Reform: Transitioning from Rule 25 to 245G

*Presenter(s): MS Strategies & DHS*

The Minnesota Department of Human Services (DHS) continues to implement reforms to the state's substance use disorder (SUD) services. The reform, directed by the 2017 Legislature, provides for reimbursement for services outside of treatment programs and adds additional Medical Assistance services such as treatment coordination, peer support services and withdrawal management. In coordination with MS Strategies, MNACHC will host a training that will cover the following items:

- Background, Overview, and Timeline of SUD Reforms
- Overview of Regulations and Requirements for Delivery of SUD Services
- Implications, Risks, and Opportunities for FQHCs
- Current and Future Reimbursement Systems
- MNACHC Advocacy Activities



*\*Please note that these are tentative agenda items, and are subject to change.*

### Location

In Person- at the MNACHC Office Building (2829 University Ave. SE, Minneapolis, MN)

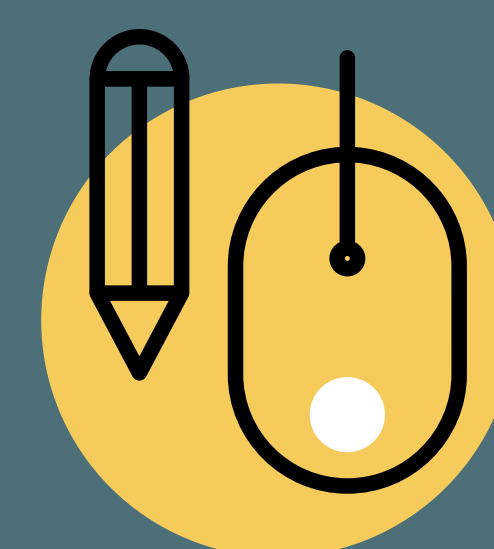
Virtually- via Zoom

### Cost

\$50/person

### Target Audience

- Health Center Leadership (Operations, Finance, Clinical, etc.)
- Compliance Staff
- Any Other Staff Involved in Managing the Provision of SUD Services



click here to  
**REGISTER**

### Cancellation Policy

Refunds are allowed up to February 13th, minus a \$10 processing fee. If after February 13th, you can send someone else in your place. Monetary refunds will not be given after February 13th.

**Questions?** Contact Monet at [monet.goudreault@mnachc.org](mailto:monet.goudreault@mnachc.org)